

# INSTRUCCIONES DE USO

## FL7A - Para quitar y poner tapas redondas planas con junta

# FIBRELITE

PART OF OPW A DOVER COMPANY

Issue: 29/04/2017

□ □ s □ □ d □ □ □ □ □ □ /

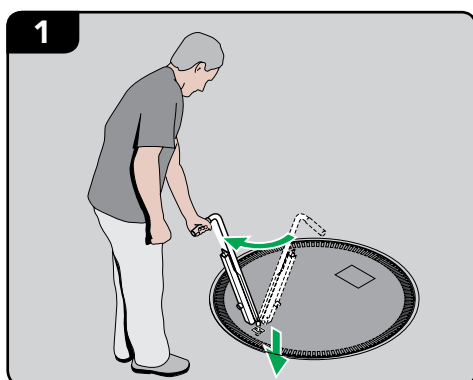
### INSTRUCCIONES DE USO PARA FL90, FL100, FL120, FL180, FL600 y FL76



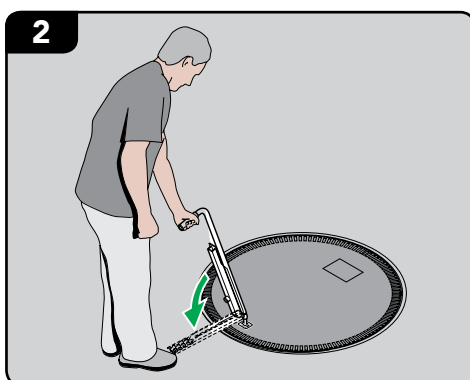
Se debe usar el bastón siempre que se quite y ponga la tapa. No inserte ninguna palanca entre la tapa y el marco. Quite el tapón inferior de la cerradura y regularmente Periodically remove the bung in the base of the key housing to clear debris. Fill with grease or anti-freeze in cold climates during winter.



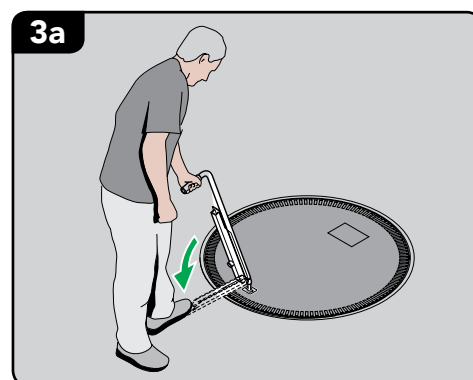
## COVER REMOVAL



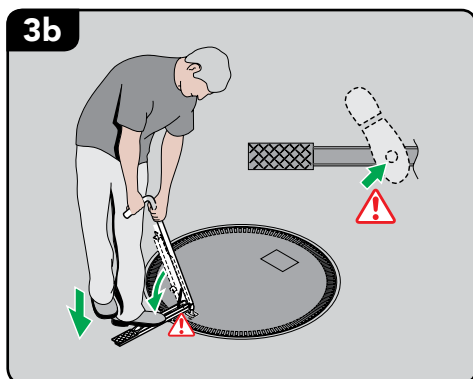
1 Insert handle, turn clockwise.



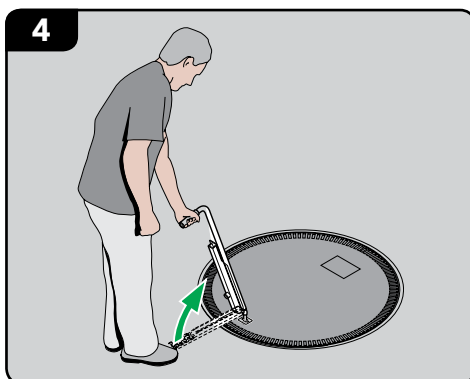
2 Release foot pedal.



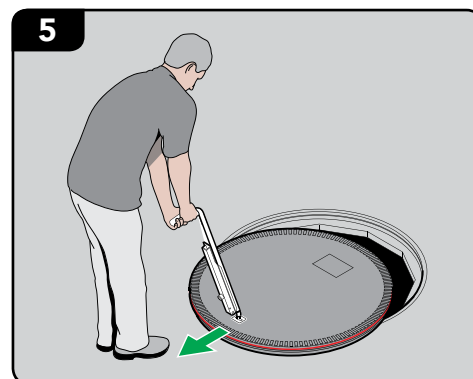
3a Push down on foot pedal.



3b If cover will not lift, Stand on lever, stamp on pedal.

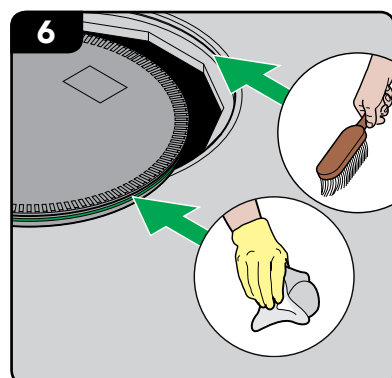


4 Return lever to upright position.

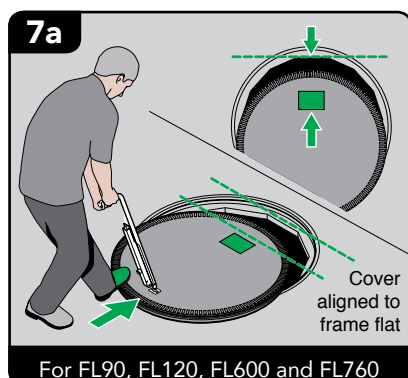


5 Remove cover.

## COVER REPLACEMENT

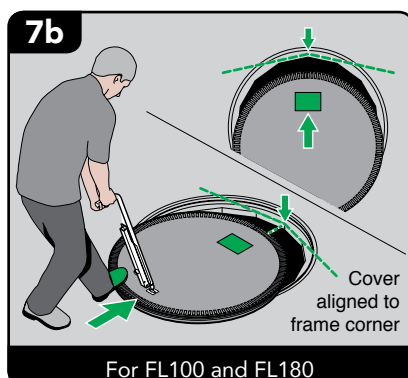


6 Clean the frame and cover gasket/seal as required.

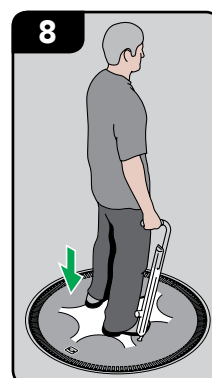


7a For FL90, FL120, FL600 and FL760

Align correctly with frame. Push cover into position using your foot.



7b For FL100 and FL180



8 Stamp cover down.

We've got you covered

UK Office: T: + 44 (0) 1756 799 773  
F: + 44 (0) 1756 799 539, E: enquiries@fibrelite.com

USA Office: T: + 1 800 422 2525  
F: + 1 (800) 421 3297, E: enquiries@fibrelite.com

Malaysia Office: T: + 603-7847 1888  
F: + 603-7846 7788, E: enquiries@fibrelite.com